

How to Automate Common z/VM and Linux on System z Tasks Session 10049

Disclaimer

>This presentation is based on current information and resource allocations as of August 17, 2007 and is subject to change or withdrawal by CA at any time without notice. Notwithstanding anything in this presentation to the contrary, this presentation shall not serve to (i) affect the rights and/or obligations of CA or its licensees under any existing or future written license agreement or services agreement relating to any CA software product; or (ii) amend any product documentation or specifications for any CA software product. The development, release and timing of any features or functionality described in this presentation remain at CA's sole discretion. Notwithstanding anything in this presentation to the contrary, upon the general availability of any future CA product release referenced in this presentation, CA will make such release available (i) for sale to new licensees of such product; and (ii) to existing licensees of such product on a when and if-available basis as part of CA maintenance and support, and in the form of a regularly scheduled major product release. Such releases may be made available to current licensees of such product who are current subscribers to CA maintenance and support on a when and if-available basis. In the event of a conflict between the terms of this paragraph and any other information contained in this presentation, the terms of this paragraph shall govern.

>CERTAIN INFORMATION IN THIS PRESENTATION MAY OUTLINE CA'S GENERAL PRODUCT DIRECTION. ALL INFORMATION IN THIS PRESENTATION IS FOR YOUR INFORMATIONAL PURPOSES ONLY AND MAY NOT BE INCORPORATED INTO ANY CONTRACT. CA ASSUMES NO RESPONSIBILITY FOR THE ACCURACY OR COMPLETENESS OF THE INFORMATION. TO THE EXTENT PERMITTED BY APPLICABLE LAW, CA PROVIDES THIS DOCUMENT "AS IS" WITHOUT WARRANTY OF ANY KIND, INCLUDING, WITHOUT LIMITATION, ANY IMPLIED WARRANTIES OF MERCHANTABILITY, FITNESS FOR A PARTICULAR PURPOSE, OR NON-INFRINGEMENT. IN NO EVENT WILL CA BE LIABLE FOR ANY LOSS OR DAMAGE, DIRECT OR INDIRECT, FROM THE USE OF THIS DOCUMENT, INCLUDING, WITHOUT LIMITATION, LOST PROFITS, LOST INVESTMENT, BUSINESS INTERRUPTION, GOODWILL OR LOST DATA, EVEN IF CA IS EXPRESSLY ADVISED OF THE POSSIBILITY OF SUCH DAMAGES.

Abstract

- > Managing console logs is a critical task, and one that can be complicated when multiple systems are supported. This presentation looks at ways to automate and simplify the following tasks: Keeping a daily log of all z/VM system messages, commands entered, and response messages and return codes; Keeping in the same daily log all Linux console and syslogd or syslog-ng messages for all Linux servers; Keeping the log organized without filling up spool or disk space; Easily reviewing the log online for selected periods; Storing older logs on tape for as long as required.

CA Solutions for Linux on System z Announcement Overview

- > **New product enhancements and strategic partnerships will help you reduce costs, improve performance and more efficiently manage Linux on System z**
 - ***New releases of CA VM:Manager Suite for Linux on System z** provide various feature enhancements including new support for managing tapes for Linux on System z, and others that help customers install, deploy, and service their CA z/VM products more effectively and quickly*
 - ***Velocity Software zVPS Performance Suite** complements CA solutions with real-time access to detail data from z/VM and Linux on System z platforms for optimized performance, capacity planning and cost chargeback*
 - ***INNOVATION Data Processing UPSTREAM for Linux on System z and UPSTREAM for z/OS UNIX** extend CA data protection capabilities with file level backup for Linux on System z and z/OS UNIX files*
 - ***CA Mainframe Connector for Linux on System z** allows CA z/OS-based automation products to receive event information from Linux on System z environments*

- > **Combined, these solutions will help remove barriers and reduce time, cost and risk of consolidating workloads to Linux on System z**

Logging System Messages

> Challenge:

- Keep a daily log of all z/VM Messages, Commands, Responses and RCs
- Keep in the same daily log all Linux console and SYSLOGD or SYSLOG-NG messages for all my Linux servers
- Keep the log organized while managing spool or disk space
- Be able to review logs online for any date and time
- Retain logs on tape for as long as needed

Logging System Messages

> Solution:

- CA VM:Operator
 - Maintains log of all messages, commands, responses and RCs
 - Maintains log of all Linux console, SYSLOGD or SYSLOG-NG messages
 - Maintains daily logs with easy access online
- CA VM:Backup
 - Automatically backup log files
 - Provides limited retention
- CA VM:Archiver
 - Automatically archive log files
 - Provides permanent retention
- CA VM:Schedule
 - Automatically schedule backups and archives

SYSLOG disk kept at 99%

```
system c
QW53270 Edit View Options Tools Help
link operator 1d0 1d0 rr
VMXACJ0171I CP command 'LINK OPERATOR 1D0 RR '
VMXACJ0172I Accepted via system rule: ACCEPT GUIRI01 LINK * * (NOPASS
DASD 01D0 LINKED R/O; R/W BY OPERATOR
Ready;
acc 1d0 b
DMSACP723I B (1D0) R/O
Ready;
q disk b
LABEL VDEV M STAT CYL TYPE BLKSZ FILES BLKS USED-(%) BLKS LEFT BLK TOTAL
VMY1D0 1D0 B R/O 3 3390 4096 104 536-99 4 540
Ready;
```

RUNNING ZVM610

Connected to usildavc.ca.com port 23

31/1	NUM	14:32:23	IBM-3278-3-E
------	-----	----------	--------------



SYSLOG files reside on OPERATOR 1D0

```
link operator 1d0 1d0 rr
VMXACJ0171I CP command 'LINK OPERATOR 1D0 RR '
VMXACJ0172I Accepted via system rule: ACCEPT GUIRI01 LINK * * (NOPASS
DASD 01D0 LINKED R/O; R/W BY OPERATOR
Ready;
acc 1d0 b
DMSACP723I B (1D0) R/O
Ready;
list * * b (d
FILENAME FILETYPE FM FORMAT LRECL RECS BLOCKS DATE TIME
090604 SYSLOG B1 F 4096 12 12 6/05/09 0:00:00
090605 SYSLOG B1 F 4096 6 6 6/05/09 14:05:37
090607 SYSLOG B1 F 4096 3 3 6/08/09 0:00:00
090608 SYSLOG B1 F 4096 1 1 6/09/09 0:00:00
090609 SYSLOG B1 F 4096 2 2 6/10/09 0:00:00
090610 SYSLOG B1 F 4096 3 3 6/11/09 0:00:00
090611 SYSLOG B1 F 4096 4 4 6/12/09 0:00:03
090612 SYSLOG B1 F 4096 6 6 6/12/09 14:31:02
090614 SYSLOG B1 F 4096 4 4 6/15/09 0:00:00
090615 SYSLOG B1 F 4096 1 1 6/16/09 0:00:00
090616 SYSLOG B1 F 4096 12 12 6/17/09 0:00:00
090617 SYSLOG B1 F 4096 13 13 6/18/09 0:00:00
090618 SYSLOG B1 F 4096 3 3 6/19/09 0:00:00
090619 SYSLOG B1 F 4096 3 3 6/20/09 0:00:00
090621 SYSLOG B1 F 4096 3 3 6/22/09 0:00:04
090622 SYSLOG B1 F 4096 3 3 6/23/09 0:00:00
090623 SYSLOG B1 F 4096 3 3 6/24/09 0:00:00
090624 SYSLOG B1 F 4096 1 1 6/25/09 0:00:00
090625 SYSLOG B1 F 4096 6 6 6/26/09 0:00:01
090626 SYSLOG B1 F 4096 1 1 6/27/09 0:00:00

```

HOLDING ZVM610



SYSLOG files reside on OPERATOR 1D0

ID	SYSLOG	Level	Priority	Size	Count	Count	Date	Time
090629	SYSLOG	B1	F	4096	4	4	6/30/09	0:00:00
090630	SYSLOG	B1	F	4096	1	1	7/01/09	0:00:00
090701	SYSLOG	B1	F	4096	1	1	7/02/09	0:00:00
090702	SYSLOG	B1	F	4096	1	1	7/03/09	0:00:01
090703	SYSLOG	B1	F	4096	1	1	7/04/09	0:00:00
090706	SYSLOG	B1	F	4096	4	4	7/07/09	0:00:02
090707	SYSLOG	B1	F	4096	1	1	7/08/09	0:00:00
090708	SYSLOG	B1	F	4096	2	2	7/09/09	0:00:00
090709	SYSLOG	B1	F	4096	3	3	7/10/09	0:00:00
090710	SYSLOG	B1	F	4096	2	2	7/11/09	0:00:01
090712	SYSLOG	B1	F	4096	4	4	7/13/09	0:00:00
090713	SYSLOG	B1	F	4096	1	1	7/14/09	0:00:01
090714	SYSLOG	B1	F	4096	11	11	7/14/09	16:09:02
090715	SYSLOG	B1	F	4096	3	3	7/16/09	0:00:00
090716	SYSLOG	B1	F	4096	1	1	7/17/09	0:00:02
090717	SYSLOG	B1	F	4096	1	1	7/18/09	0:00:00
090720	SYSLOG	B1	F	4096	22	22	7/21/09	0:00:00
090721	SYSLOG	B1	F	4096	36	36	7/22/09	0:00:00
090722	SYSLOG	B1	F	4096	63	63	7/23/09	0:00:00
090723	SYSLOG	B1	F	4096	1	1	7/24/09	0:00:00
090724	SYSLOG	B1	F	4096	1	1	7/25/09	0:00:00
090727	SYSLOG	B1	F	4096	4	4	7/28/09	0:00:01
090728	SYSLOG	B1	F	4096	1	1	7/29/09	0:00:00
090729	SYSLOG	B1	F	4096	1	1	7/30/09	0:00:01
090730	SYSLOG	B1	F	4096	1	1	7/31/09	0:00:00
090731	SYSLOG	B1	F	4096	1	1	8/01/09	0:00:00
090803	SYSLOG	B1	F	4096	4	4	8/04/09	0:00:00
090804	SYSLOG	B1	F	4096	1	1	8/05/09	0:00:01
090805	SYSLOG	B1	F	4096	17	17	8/06/09	0:00:00
090806	SYSLOG	B1	F	4096	17	17	8/07/09	0:00:00

HOLDING ZVM610

Connected to usildavc.ca.com port 23

31/1 NUM 14:27:39 IBM-3278-3-E

SYSLOG files reside on OPERATOR 1D0

090807	SYSLOG	B1	F	4096	4	4	8/08/09	0:00:00
090810	SYSLOG	B1	F	4096	4	4	8/11/09	0:00:00
090811	SYSLOG	B1	F	4096	2	2	8/12/09	0:00:02
090812	SYSLOG	B1	F	4096	1	1	8/13/09	0:00:00
090813	SYSLOG	B1	F	4096	2	2	8/14/09	0:00:01
090814	SYSLOG	B1	F	4096	2	2	8/15/09	0:00:00
090816	SYSLOG	B1	F	4096	3	3	8/17/09	0:00:02
090817	SYSLOG	B1	F	4096	2	2	8/17/09	16:22:58
090818	SYSLOG	B1	F	4096	3	3	8/18/09	11:17:58
090824	SYSLOG	B1	F	4096	4	4	8/25/09	0:00:02
090825	SYSLOG	B1	F	4096	2	2	8/26/09	0:00:01
090826	SYSLOG	B1	F	4096	1	1	8/27/09	0:00:01
090827	SYSLOG	B1	F	4096	1	1	8/28/09	0:00:02
090828	SYSLOG	B1	F	4096	1	1	8/29/09	0:00:02
090830	SYSLOG	B1	F	4096	4	4	8/31/09	0:00:01
090831	SYSLOG	B1	F	4096	1	1	9/01/09	0:00:01
090901	SYSLOG	B1	F	4096	1	1	9/02/09	0:00:02
090902	SYSLOG	B1	F	4096	4	4	9/03/09	0:00:01
090903	SYSLOG	B1	F	4096	2	2	9/04/09	0:00:02
090904	SYSLOG	B1	F	4096	1	1	9/05/09	0:00:01
090906	SYSLOG	B1	F	4096	3	3	9/07/09	0:00:00
090907	SYSLOG	B1	F	4096	1	1	9/08/09	0:00:02
090908	SYSLOG	B1	F	4096	1	1	9/09/09	0:00:00
090909	SYSLOG	B1	F	4096	5	5	9/10/09	0:00:00
090910	SYSLOG	B1	F	4096	1	1	9/11/09	0:00:01
090911	SYSLOG	B1	F	4096	3	3	9/12/09	0:00:00
090913	SYSLOG	B1	F	4096	4	4	9/14/09	0:00:02
090914	SYSLOG	B1	F	4096	1	1	9/15/09	0:00:00
090915	SYSLOG	B1	F	4096	4	4	9/16/09	0:00:02
090916	SYSLOG	B1	F	4096	2	2	9/17/09	0:00:00

HOLDING ZVM610

Connected to usildavc.ca.com port 23

31/1 NUM 14:28:02 IBM-3278-3-E

SYSLOG files reside on OPERATOR 1D0

```
system c
QW53270 Edit View Options Tools Help

090917  SYSLOG  B1 F      4096      1          1  9/18/09  0:00:00
090918  SYSLOG  B1 F      4096      3          3  9/19/09  0:00:00
090920  SYSLOG  B1 F      4096      3          3  9/21/09  0:00:01
090921  SYSLOG  B1 F      4096      4          4  9/22/09  0:00:02
090922  SYSLOG  B1 F      4096      5          5  9/23/09  0:00:01
090923  SYSLOG  B1 F      4096      7          7  9/24/09  0:00:04
090924  SYSLOG  B1 F      4096      1          1  9/25/09  0:00:01
090925  SYSLOG  B1 F      4096      8          8  9/26/09  0:00:00
090928  SYSLOG  B1 F      4096      4          4  9/29/09  0:00:00
090929  SYSLOG  B1 F      4096      1          1  9/30/09  0:00:01
090930  SYSLOG  B1 F      4096      3          3 10/01/09  0:00:00
091001  SYSLOG  B1 F      4096      3          3 10/02/09  0:00:00
091002  SYSLOG  B1 F      4096      7          7 10/03/09  0:00:00
091004  SYSLOG  B1 F      4096      5          5 10/05/09  0:00:01
091005  SYSLOG  B1 F      4096      2          2 10/06/09  0:00:00
091006  SYSLOG  B1 F      4096      7          7 10/07/09  0:00:02
091007  SYSLOG  B1 F      4096      2          2 10/08/09  0:00:00
091008  SYSLOG  B1 F      4096      1          1 10/09/09  0:00:01
091009  SYSLOG  B1 F      4096      1          1 10/10/09  0:00:00
091011  SYSLOG  B1 F      4096      3          3 10/12/09  0:00:00
091012  SYSLOG  B1 F      4096      1          1 10/13/09  0:00:00
091013  SYSLOG  B1 F      4096      5          5 10/14/09  0:00:00
091014  SYSLOG  B1 F      4096      1          1 10/15/09  0:00:00
091015  SYSLOG  B1 F      4096      9          9 10/15/09 13:55:07
Ready;
```

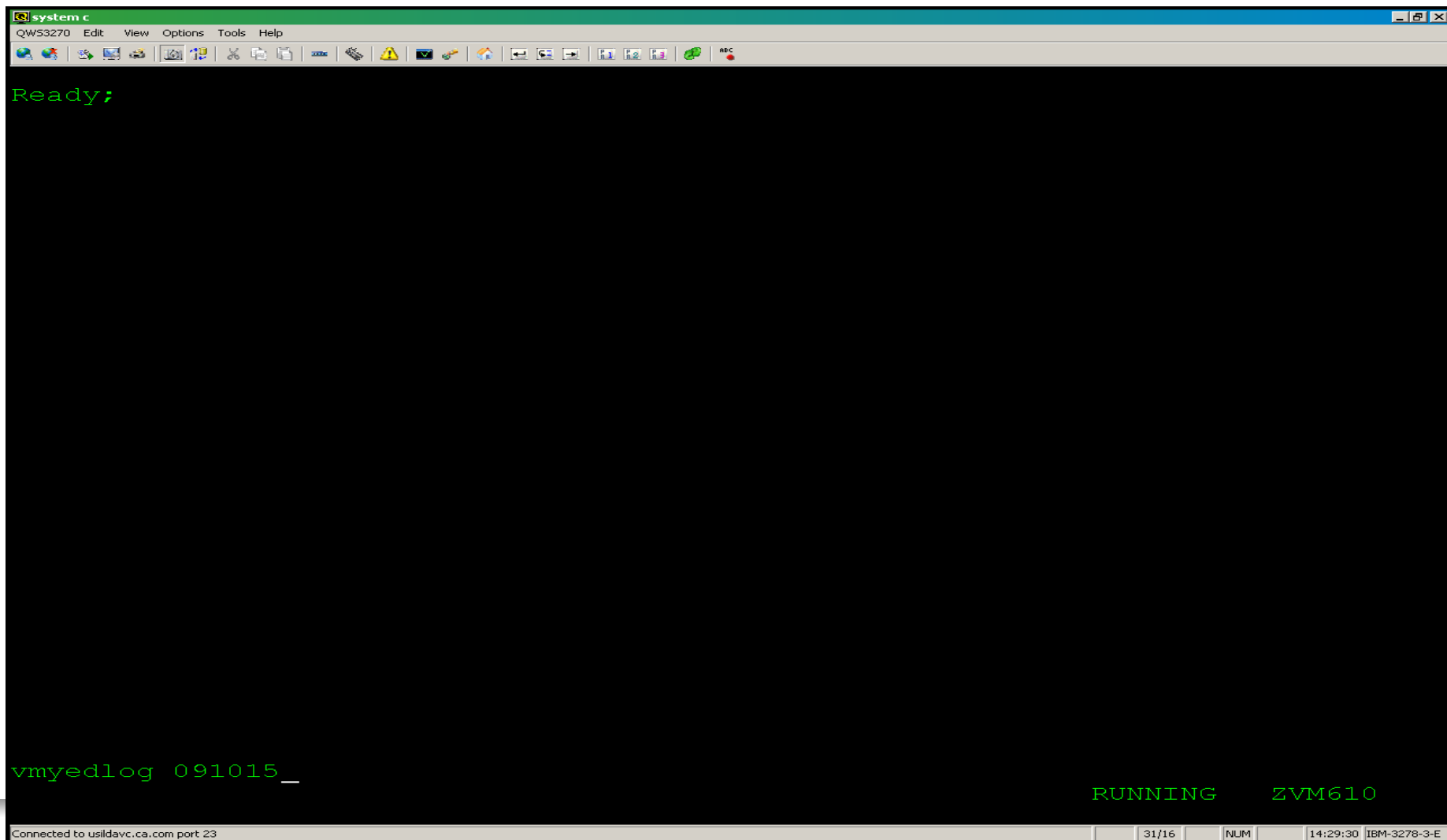
RUNNING ZVM610

Connected to usildavc.ca.com port 23

31/1 NUM 14:28:38 IBM-3278-3-E



VMYEDLOG to view any SYSLOG (1)



VMYEDLOG to view any SYSLOG

```
system c
QW53270 Edit View Options Tools Help

GUIRI01 FILELIST A0 V 169 Trunc=169 Size=104 Line=1 Col=1 Alt=9
Cmd  Filename Filetype Fm Format Lrecl  Records  Blocks  Date  Time
091015  SYSLOG  B1 F  4096  9  9 10/15/09 13:55:07
091014  SYSLOG  B1 F  4096  1  1 10/15/09  0:00:00
vmyedlog /  SYSLOG  B1 F  4096  5  5 10/14/09  0:00:00
091012  SYSLOG  B1 F  4096  1  1 10/13/09  0:00:00
091011  SYSLOG  B1 F  4096  3  3 10/12/09  0:00:00
091009  SYSLOG  B1 F  4096  1  1 10/10/09  0:00:00
091008  SYSLOG  B1 F  4096  1  1 10/09/09  0:00:01
091007  SYSLOG  B1 F  4096  2  2 10/08/09  0:00:00
091006  SYSLOG  B1 F  4096  7  7 10/07/09  0:00:02
091005  SYSLOG  B1 F  4096  2  2 10/06/09  0:00:00
091004  SYSLOG  B1 F  4096  5  5 10/05/09  0:00:01
091002  SYSLOG  B1 F  4096  7  7 10/03/09  0:00:00
091001  SYSLOG  B1 F  4096  3  3 10/02/09  0:00:00
090930  SYSLOG  B1 F  4096  3  3 10/01/09  0:00:00
090929  SYSLOG  B1 F  4096  1  1  9/30/09  0:00:01
090928  SYSLOG  B1 F  4096  4  4  9/29/09  0:00:00
090925  SYSLOG  B1 F  4096  8  8  9/26/09  0:00:00
090924  SYSLOG  B1 F  4096  1  1  9/25/09  0:00:01
090923  SYSLOG  B1 F  4096  7  7  9/24/09  0:00:04
090922  SYSLOG  B1 F  4096  5  5  9/23/09  0:00:01
090921  SYSLOG  B1 F  4096  4  4  9/22/09  0:00:02
090920  SYSLOG  B1 F  4096  3  3  9/21/09  0:00:01
090918  SYSLOG  B1 F  4096  3  3  9/19/09  0:00:00
090917  SYSLOG  B1 F  4096  1  1  9/18/09  0:00:00
090916  SYSLOG  B1 F  4096  2  2  9/17/09  0:00:00

1= Help      2= Refresh   3= Quit      4= Sort(type)  5= Sort(date)  6= Sort(size)
7= Backward  8= Forward   9= FL /n    10=           11= XEDIT/LIST 12= Cursor

====>

X E D I T  1 File
```



VMYEDLOG to view any SYSLOG

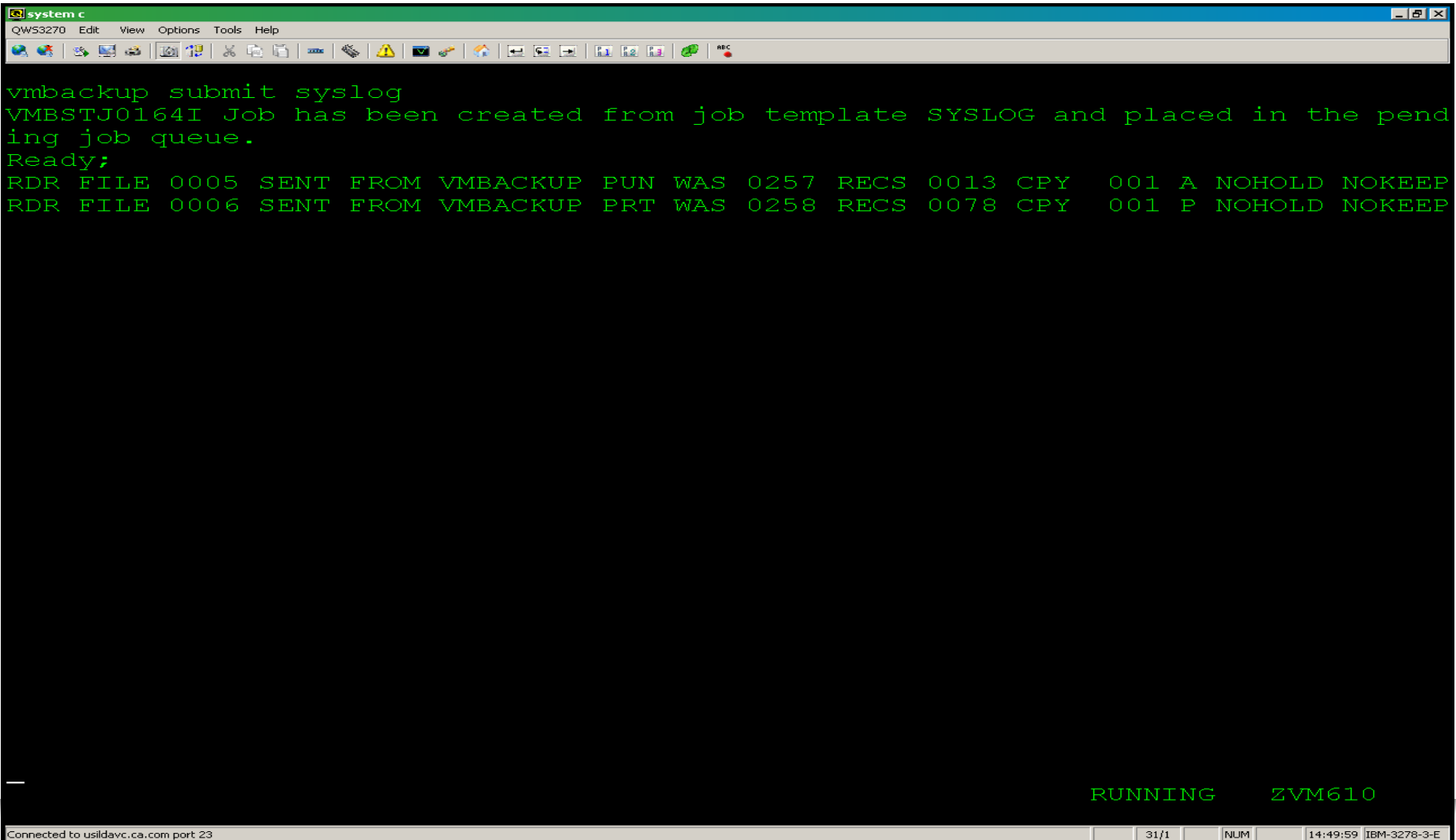
```
system c
QW53270 Edit View Options Tools Help
091015 VMYEDLOG A1 V 132 Trunc=132 Size=408 Line=187 Col=1 Alt=0
===== 10:52:39 GUIRI01 002C VMYCMD1112I Ending command admin with completion c
===== 10:53:00 OPERATOR *3 GRAF 0023 LOGOFF AS GUIRI01 USERS = 15
===== 10:53:05 OPERATOR *3 GRAF 0023 LOGON AS VMRMAINT USERS = 16
===== 10:53:12 VMRMAINT 002F VMYCMD1111I Beginning command: rvs query
===== 10:53:12 VMRMAINT 002F VMYCMD1112I Ending command rvs with completion cod
===== 10:58:18 MAINOPER 0030 VMYINI0019R Enter: remote zvm530 cp q tape
===== 10:58:18 MAINOPER 0030 An active tape was not found.
===== 10:58:18 MAINOPER 0030 VMYINI0006I 0.000 Ready;
===== 11:12:17 MAINOPER 0031 VMYINI0019R Enter: q tape
===== 11:12:17 MAINOPER 0031 An active tape was not found.
===== 11:12:17 MAINOPER 0031 VMYINI0006I 0.005 Ready;
===== 11:12:23 MAINOPER 0032 VMYINI0019R Enter: rvs query
===== 11:12:23 MAINOPER 0032 NodeID Status WriteCtr ReadCtr
===== 11:12:23 MAINOPER 0032 -----
===== 11:12:23 MAINOPER 0032 ZVM530 Enabled 11 11
===== 11:12:23 MAINOPER 0032 ZVM540 Enabled 6 6
===== 11:12:23 MAINOPER 0032 VMYINI0006I 0.000 Ready;
===== 11:12:25 MAINOPER 0033 VMYINI0019R Enter: rvs query
===== 11:12:25 MAINOPER 0033 NodeID Status WriteCtr ReadCtr
===== 11:12:25 MAINOPER 0033 -----
===== 11:12:25 MAINOPER 0033 ZVM530 Enabled 11 11
===== 11:12:25 MAINOPER 0033 ZVM540 Enabled 6 6
===== 11:12:25 MAINOPER 0033 VMYINI0006I 0.000 Ready;
===== 11:12:30 MAINOPER 0034 VMYINI0019R Enter: file1
===== 11:12:49 MAINOPER 0034 VMYINI0006I 0.003 Ready;
===== 11:12:57 MAINOPER 0035 VMYINI0019R Enter: table load log zvm610
===== 11:12:57 MAINOPER 0035 VMYTAB0206I Loading ZVM610 LOGTABLE.
===== 11:12:57 MAINOPER 0035 VMYINI0006I 0.000 Ready;
=====>
X E D I T 1 File
Connected to usildavc.ca.com port 23
31/7 NUM 14:30:43 IBM-3278-3-E
```

CA VM:Archiver list of SYSLOG files to archive

```
system c
QW53270 Edit View Options Tools Help
-----
LXCFUAC1 CMS Files VM:Archiver 2.3
-----
Type Archive or a CMS command in the Cmd column, then press ENTER
-----
Cmd      Filename  Filetype  FM  Format  Lrecl  Records  Blocks  Date      Time
-----
091015   SYSLOG   B1 F      4096   9        9  10/15/09  13:55:07
091014   SYSLOG   B1 F      4096   1        1  10/15/09   0:00:00
091013   SYSLOG   B1 F      4096   5        5  10/14/09   0:00:00
091012   SYSLOG   B1 F      4096   1        1  10/13/09   0:00:00
091011   SYSLOG   B1 F      4096   3        3  10/12/09   0:00:00
091009   SYSLOG   B1 F      4096   1        1  10/10/09   0:00:00
091008   SYSLOG   B1 F      4096   1        1  10/09/09   0:00:01
091007   SYSLOG   B1 F      4096   2        2  10/08/09   0:00:00
091006   SYSLOG   B1 F      4096   7        7  10/07/09   0:00:02
091005   SYSLOG   B1 F      4096   2        2  10/06/09   0:00:00
091004   SYSLOG   B1 F      4096   5        5  10/05/09   0:00:01
091002   SYSLOG   B1 F      4096   7        7  10/03/09   0:00:00
091001   SYSLOG   B1 F      4096   3        3  10/02/09   0:00:00
090930   SYSLOG   B1 F      4096   3        3  10/01/09   0:00:00
090929   SYSLOG   B1 F      4096   1        1   9/30/09   0:00:01
090928   SYSLOG   B1 F      4096   4        4   9/29/09   0:00:00
090925   SYSLOG   B1 F      4096   8        8   9/26/09   0:00:00
090924   SYSLOG   B1 F      4096   1        1   9/25/09   0:00:01
090923   SYSLOG   B1 F      4096   7        7   9/24/09   0:00:04
090922   SYSLOG   B1 F      4096   5        5   9/23/09   0:00:01
090921   SYSLOG   B1 F      4096   4        4   9/22/09   0:00:02
-----
PF: 1  Help      2  Refresh  3  End      4  Options  5  ...      6  ViewLog
PF: 7  Backward  8  Forward  9  Display 10  Sort     11 Print   12 Cursor
=====
>
```



CA VM:Backup job backing up SYSLOG files to DASDtape



The screenshot shows a terminal window titled "system c" with a menu bar (QW53270 Edit View Options Tools Help) and a toolbar. The terminal output is as follows:

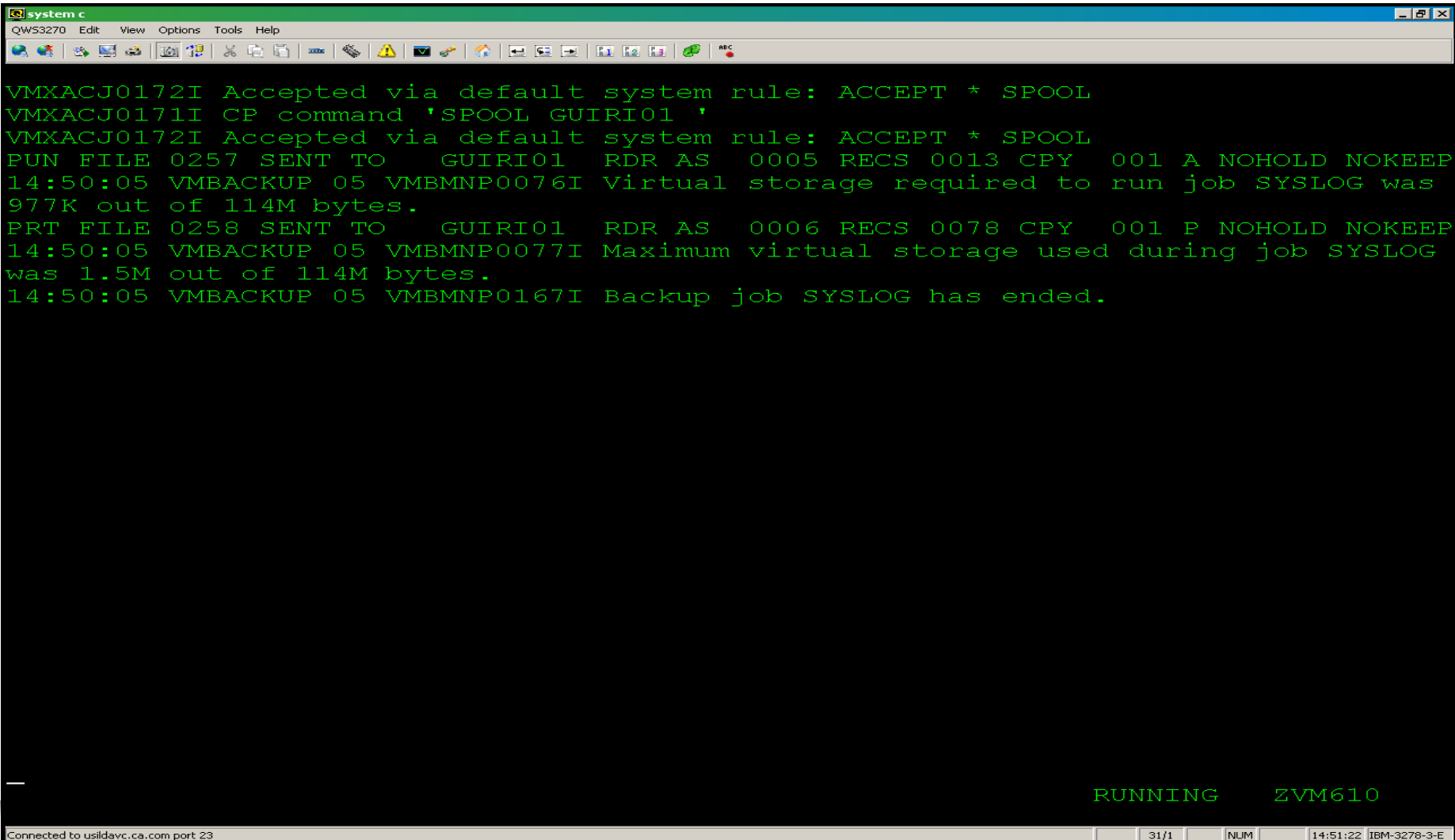
```
vmbackup submit syslog
VMBSTJ0164I Job has been created from job template SYSLOG and placed in the pending job queue.
Ready;
RDR FILE 0005 SENT FROM VMBACKUP PUN WAS 0257 RECS 0013 CPY 001 A NOHOLD NOKEEP
RDR FILE 0006 SENT FROM VMBACKUP PRT WAS 0258 RECS 0078 CPY 001 P NOHOLD NOKEEP
```

At the bottom right of the terminal, the status "RUNNING ZVM610" is displayed. The bottom status bar shows "Connected to usildavc.ca.com port 23", "31/1", "NUM", "14:49:59", and "IBM-3278-3-E".

CA VM:Backup console showing backup of SYSLOG files to DASDtape

```
system c
QW53270 Edit View Options Tools Help
14:46:46 GUIRI01 01 VMBCMD0011I Beginning command: VERSION
14:46:46 GUIRI01 01 VMBCMD0012I Ending command VERSION with completion code 0.
14:46:48 GUIRI01 02 VMBCMD0011I Beginning command: VMBACKUP
14:49:21 GUIRI01 02 VMBCMD0012I Ending command VMBACKUP with completion code 0.
14:49:33 GUIRI01 03 VMBCMD0011I Beginning command: VMBACKUP
14:49:50 GUIRI01 03 VMBCMD0012I Ending command VMBACKUP with completion code 0.
14:49:59 GUIRI01 04 VMBCMD0011I Beginning command: SUBMIT SYSLOG
14:50:01 GUIRI01 04 VMBSTJ0164I Job has been created from job template SYSLOG a
nd placed in the pending job queue.
14:50:01 GUIRI01 04 VMBCMD0012I Ending command SUBMIT with completion code 0.
VMXACJ0171I CP command 'SPOOL GUIRI01 '
VMXACJ0172I Accepted via default system rule: ACCEPT * SPOOL
14:50:01 VMBACKUP 05 VMBMNP0166I Backup job SYSLOG has been started.
14:50:01 VMBACKUP 00 VMBDTP0710I DASDtape 1E5003 on tape disk 01E5 has been moun
ted on 0310 for job SYSLOG.
14:50:01 VMBACKUP 05 VMBTUP0604I Mount on 0310 for volume 1E5003 has completed s
uccessfully.
14:50:05 VMBACKUP 00 VMBDTP0712I DASDtape 1E5003 on tape disk 01E5 has been demo
unted from 0310 for job SYSLOG.
14:50:05 VMBACKUP 05 VMBMMP0308I Stream 1 for job SYSLOG has completed.
14:50:05 VMBACKUP 05 VMBCME0863I Catalog 00000000 was created on catalog minidis
k 01B0.
14:50:05 VMBACKUP 05 VMBCME0433I Updating catalog index files for 00000000 DUMPJ
OB
14:50:05 VMBACKUP 05 VMBCME0434I Catalog index files for 00000000 DUMPJOB have b
een updated
14:50:05 VMBACKUP 05 VMBCME0864I Maximum space used on catalog minidisk 01B0 dur
ing the job was 17 blocks of 5940 (0%).
14:50:05 VMBACKUP 05 VMBFCC0860I 00000000 DETAIL was verified.
VMXACJ0171I CP command 'SPOOL GUIRI01 '
HOLDING ZVM610
Connected to usildavc.ca.com port: 23
31/1 NUM 14:50:36 IBM-3278-3-E
```

CA VM:Backup console showing backup of SYSLOG files to DASDtape



```
VMXACJ0172I Accepted via default system rule: ACCEPT * SPOOL
VMXACJ0171I CP command 'SPOOL GUIRI01 '
VMXACJ0172I Accepted via default system rule: ACCEPT * SPOOL
PUN FILE 0257 SENT TO    GUIRI01    RDR AS    0005 RECS 0013 CPY    001 A NOHOLD NOKEEP
14:50:05 VMBACKUP 05 VMBMNP0076I Virtual storage required to run job SYSLOG was
977K out of 114M bytes.
PRT FILE 0258 SENT TO    GUIRI01    RDR AS    0006 RECS 0078 CPY    001 P NOHOLD NOKEEP
14:50:05 VMBACKUP 05 VMBMNP0077I Maximum virtual storage used during job SYSLOG
was 1.5M out of 114M bytes.
14:50:05 VMBACKUP 05 VMBMNP0167I Backup job SYSLOG has ended.
```

Connected to usildavc.ca.com port: 23

31/1 NUM 14:51:22 IBM-3278-3-E

RUNNING ZVM610

CA VM:Backup list of SYSLOG files to restore

```
system c
QW53270 Edit View Options Tools Help
SFMRABC1          Select Files Backed Up For Userid OPERATOR          VM:Backup
-----
Type R next to each file you want to restore, or type R* to restore a minidisk
or a directory.  Then press PF9.

Req  Filename      Filetype  Vaddr  Last Revised      Records Backup Date/Time Att
--  -
   090604      SYSLOG    01D0    06/05/09  00:00             12 10/15/09  14:53  -
   090605      SYSLOG    01D0    06/05/09  14:05              6 10/15/09  14:53  -
   090607      SYSLOG    01D0    06/08/09  00:00              3 10/15/09  14:53  -
   090608      SYSLOG    01D0    06/09/09  00:00              1 10/15/09  14:53  -
   090609      SYSLOG    01D0    06/10/09  00:00              2 10/15/09  14:53  -
   090610      SYSLOG    01D0    06/11/09  00:00              3 10/15/09  14:53  -
   090611      SYSLOG    01D0    06/12/09  00:00              4 10/15/09  14:53  -
   090612      SYSLOG    01D0    06/12/09  14:31              6 10/15/09  14:53  -
   090614      SYSLOG    01D0    06/15/09  00:00              4 10/15/09  14:53  -
   090615      SYSLOG    01D0    06/16/09  00:00              1 10/15/09  14:53  -
   090616      SYSLOG    01D0    06/17/09  00:00             12 10/15/09  14:53  -
   090617      SYSLOG    01D0    06/18/09  00:00             13 10/15/09  14:53  -
-----
PF: 1  Help      2  Seename  3  End      4  Stype    5  Sdate    6  Sname
PF: 7  Backward  8  Forward  9  Submit   10  ...      11  Print    12  Cursor

===>
```



Message Filtering

> Challenge:

- Missing important messages on OPERATOR console
- Messages scroll off the OPERATOR console too fast
- Most messages are noise and not critical to operations

Message Filtering

> Solution:

- CA VM:Operator Routing Tables
 - Maps console messages to actions
 - Actions control how message is displayed or processed
- Additionally CA VM:Operator can
 - Filter common noise messages
 - Provide special display for important messages
- Keep critical messages on the screen

SYSTEM window showing important messages (1) in red and white

```
testcp7 with lnxibmids
QW53270 Edit View Options Tools Help
SYSTEM 000% 29 Users VM:Operator on OPERATOR(TESTCP7) Thu 15Oct09 13:05
VMYINI0087I Starting system process: REVERT 120 SYSTEM
VMYINI0087I Starting system process: TAPEMGR HILIGHT ALARM ELAPSED
VMYINI0087I Starting system process: SECUSER LNXIBMDS SECTABLE LNXIBMDS
VMYSEC0176I LNXIBMDS routing table loaded for LNXIBMDS window on MAINOPER consol
VMYINI0087I Starting system process: TAPEMGR RDYMSG HILIGHT DISPLAY 8
VMYINI0087I Starting system process: SESSIONS 8 SYSREQ PF2 PF1 PF3
VMYINI0087I Starting system process: REVIEW * TIMEOUT 180
VMYLGX0268I Session LINUX DIALOG processing has completed.
VMYINI0088I Ending SESSION, RC= 0, VirtCPU=0.000
VMYINI0087I Starting system process: REVIEW LNXIBMDS TIMEOUT 120
13:04:48 HCPCQU045E LNXIBMDS not logged on
VMYCFG0023I Initialization complete at 13:04:48 on 15Oct09.
Logging on SESSION1 as NEWID
Logging on SESSION2 as NEWID1
VMYPPI0147E Service virtual machine VMTAPE not available.
13:04:50 From VMSPool : VMLSYS040W Spool space is 67.78% full, increasing at
8.28% per minute.
13:04:50 From VMSPool : VMLSYS043W Spool space is projected to reach 85% full in
2 minutes.
Logon Reconnect of NEWID took 3.53
VMYLGX0268I Session SESSION1 DIALOG processing has completed.
Logon Reconnect of NEWID1 took 3.54
VMYLGX0268I Session SESSION2 DIALOG processing has completed.
rdrl
VMYINI0006I 0.005 Ready;
13:05:20 From VMSPool : VMLSYS186I Spool space is 55.36% full, now below
threshold value.
----- SYSTEM Window -----
1= ViewNext 2= Review 3= ViewPrev 4= RemvLine 5= Remv All 6= Retrieve
7= 8= 9= Repeat 10= Print 11= Expand 12= Remv Top
===> MAINOPER
```



SYSTEM window showing important messages red got held, white rolled off

```
testcp7 with lnxibmbs
QW53270 Edit View Options Tools Help
SYSTEM 000% 29 Users VM:Operator on OPERATOR(TESTCP7) Thu 15Oct09 14:12
13:04:48 HCPCQU045E LNXIBMDS not logged on
VMYPPI0147E Service virtual machine VMTAPE not available.
14:12:16 From VMSECURE: 13:41:15 VMXSER0568I Servant VMX$0004 has been deleted.
14:12:16 From VMSECURE: 13:41:16 VMXAIE1261I Agent TESTTCP11 has connected.
14:12:16 From VMSECURE: 13:41:16 VMXAIE1261I Agent TESTTCP10 has connected.
14:12:16 From VMSECURE: 13:41:22 VMXCFG0023I VM:Secure initialization complete
on 10/15/09.
14:12:16 From VMSECURE: VMXSYS0487W Unable to autolog AUTOLOG2, CP return code
59.
14:12:16 USER DSC LOGOFF AS AUTOLOG2 USERS = 29 FORCED BY SYSTEM
14:12:16 GRAF 0024 DISCONNECT VMSECURE USERS = 29
14:12:16 From VMSECURE: 13:58:04 VMXRXB0739I A dynamic REBUILD has started.
Directory maintenance activity is suspended until complete.
14:12:16 From VMSECURE: 13:58:04 VMXRXB0065I Directory contains 193 users, 9
profiles and 6 pool members on 94 pages.
14:12:16 From VMSECURE: 13:58:04 VMXRXB0294I The directory contains 1260 total
pages. 1166 pages are available for use.
14:12:16 From VMSECURE: 13:58:04 VMXRXB0740I The dynamic REBUILD has completed.
Directory maintenance activity will now resume.
14:12:16 From VMSECURE: 14:02:58 VMXRXB0739I A dynamic REBUILD has started.
Directory maintenance activity is suspended until complete.
14:12:16 From VMSECURE: 14:02:59 VMXRXB0065I Directory contains 193 users, 10
profiles and 6 pool members on 94 pages.
14:12:16 From VMSECURE: 14:02:59 VMXRXB0294I The directory contains 1260 total
pages. 1166 pages are available for use.
14:12:16 From VMSECURE: 14:02:59 VMXRXB0740I The dynamic REBUILD has completed.
Directory maintenance activity will now resume.
-----
SYSTEM Window
1= ViewNext 2= Review 3= ViewPrev 4= RemvLine 5= Remv All 6= Retrieve
7= 8= 9= Repeat 10= Print 11= Expand 12= Remv Top
===> MAINOPER
Connected to testcp7.ca.com port 23 32/6 NUM 14:12:04 IBM-3278-3-E
```

Review window shows LOGON/LOGOFF messages logged that are not displayed in SYSTEM window

```
testcp7 with Inxibmds
QW53270 Edit View Options Tools Help
REVIEW 000% 29 Users VM:Operator on OPERATOR(TESTCP7) Thu 15Oct09 14:14
VMYREV0119I Reviewing: 091015 SYSLOG Forward scrolling.
14:12:16 OPERATOR *3 GRAF L0040 LOGOFF AS VMRPAM USERS = 29
14:12:16 VMSECURE *1 14:02:58 VMXRXB0739I A dynamic REBUILD has started. Direc
14:12:16 VMSECURE .... e.
14:12:16 VMSECURE *1 14:02:59 VMXRXB0065I Directory contains 193 users, 10 pro
14:12:16 VMSECURE *1 14:02:59 VMXRXB0294I The directory contains 1260 total pa
14:12:16 VMSECURE *1 14:02:59 VMXRXB0740I The dynamic REBUILD has completed. D
14:12:16 OPERATOR *3 GRAF L0041 LOGON AS VMRPAM USERS = 30
14:12:16 OPERATOR *3 GRAF L0041 LOGOFF AS VMRPAM USERS = 29
14:12:41 OPERATOR *3 GRAF L0042 LOGON AS VMRPAM USERS = 30
14:12:41 OPERATOR *3 GRAF L0042 LOGOFF AS VMRPAM USERS = 29
14:12:50 OPERATOR *3 GRAF L0043 LOGON AS VMRPAM USERS = 30
14:12:51 OPERATOR *3 GRAF L0043 LOGOFF AS VMRPAM USERS = 29
VMYREV0121I End-of-File

PF set 1 ----- System Review -----
1= Top 2= Refresh 3= Return 4= PrevHour 5= NextHour 6= Retrieve
7= Backward 8= Forward 9= Extract 10= AltPFkey 11= Left 12= Right
VMYREV0120R Enter search string: _ MAINOPER

Connected to testcp7.ca.com port 23 32/34 NUM 14:13:44 IBM-3278-3-E
```


MAINOPER SYSTABLE definitions for LOGON and LOGOFF messages

```
testcp7 with Inxibmbs
QW53270 Edit View Options Tools Help

MAINOPER SYSTABLE A1 V 80 Trunc=80 Size=66 Line=20 Col=1 Alt=0

==== * * * Top of File * * *
====
==== * Suppress displaying various CP LOGON, AUTOLOG, DIALED, DROPPED,
==== * DISCONNECT, RECONNECT and LOGOFF (except when forced) messages.
==== IGNORE MSG * *3 * @10.3 ='LOGON AS'
==== IGNORE MSG * *3 * ='AUTO LOGON '
==== IGNORE MSG * *3 * @10.3 ='DIALED TO'
==== IGNORE MSG * *3 * @10.3 ='DROP FROM'
==== IGNORE MSG * *3 * @10.3 ='DISCONNECT'
==== IGNORE MSG * *3 * @10.3 ='RECONNECT'
==== IGNORE MSG * *3 * @10.3 ='LOGOFF AS' .30 -'FORCE'
====
==== * * * End of File * * *

====> _

X E D I T 1 File
```



Multiple Consoles

> Challenge:

- Need for customizable console based on role
- Tape Operators need console for tape messages
- z/VM System Programmers need an OPERATOR console
- Linux Administrators need a Linux console

Multiple Consoles

> Solution:

- With CA VM:Operator you can:
 - Define multiple consoles
 - Define what should run on the consoles
 - Define processes associated with a console
 - Define spool and printer used by the console
- Define temporary operator consoles
 - View activity and enter operator commands from own terminal
- Share common console definitions including:
 - Processes
 - Program function key settings
 - Color settings
 - Reserved window text lines
- Operator and Linux consoles discussed more in next sections

Operator Consoles

> Challenge:

- Need to watch message activity and enter commands for several different user IDs from one console.

Operator Consoles

> Solution:

- CA VM:Operator can simultaneously use any number of consoles
- Using CA VM:Operator, multiple windows are usually defined to run on consoles
- Using CA VM:Operator SECUSER windows, monitor and control activity on disconnected virtual machines

SYSTEM window showing Linux startup messages

```
testcp7 with lnxiibm
QW53270 Edit View Options Tools Help
SYSTEM 000% 27 Users VM:Operator on OPERATOR(TESTCP7) Thu 15Oct09 12:00
VMYINI0006I 0.001 Ready;
12:00:33 LNXIBMDS: z/VM V5.4.0 2009-01-20 16:05
12:00:33 LNXIBMDS: VMXACJ0098I CP command 'SPOOL SCUWI01 ' accepted by NORULE
default.
12:00:33 LNXIBMDS: There is no rule governing this request.
12:00:33 LNXIBMDS: DMSACP112S Z(200) device error
12:00:33 LNXIBMDS: DMSFOR603R FORMAT will erase all files on disk Z(200). Do you
wish to continue? Enter 1 (YES) or 0 (NO).
12:00:33 LNXIBMDS: DMSFOR605R Enter disk label:
12:00:33 LNXIBMDS: DMSFOR733I Formatting disk Z
12:00:33 LNXIBMDS: DMSFOR732I 409600 FB-512 blocks formatted on Z(200)
12:00:33 LNXIBMDS: Just one moment...
12:00:33 LNXIBMDS: HCPDTV040E Device 00CA does not exist
12:00:33 LNXIBMDS: 0190 0191 019D 019E DETACHED
12:00:34 LNXIBMDS: zIPL v1.8.0 interactive boot menu
12:00:34 LNXIBMDS:
12:00:34 LNXIBMDS: 0. default (Linux)
12:00:34 LNXIBMDS:
12:00:34 LNXIBMDS: 1. Linux
12:00:34 LNXIBMDS: 2. ipl
12:00:34 LNXIBMDS: 3. Failsafe
12:00:34 LNXIBMDS:
12:00:34 LNXIBMDS: Note: VM users please use '#cp vi vmmsg <number>
<kernel-parameters>'
12:00:34 LNXIBMDS:
12:00:34 LNXIBMDS: Please choose (default will boot in 10 seconds):
12:00:44 LNXIBMDS: Booting default (Linux)...
----- SYSTEM Window -----
1= ViewNext 2= Review 3= ViewPrev 4= RemvLine 5= Remv All 6= Retrieve
7= 8= 9= Repeat 10= Print 11= Expand 12= Remv Top
==>
MAINOPER
Connected to testcp7.ca.com port 23 5/11 NUM 12:00:36 IBM-3278-3-E
```

SYSTEM window showing Linux startup messages

```
testcp7 with lnxibmbs
QW53270 Edit View Options Tools Help
SYSTEM 000% 28 Users VM:Operator on OPERATOR(TESTCP7) Thu 15Oct09 12:01
12:01:14 LNXIBMDS: Freeing unused kernel memory: 196k freed
12:01:14 LNXIBMDS: doing fast boot
12:01:15 LNXIBMDS: Creating device nodes with udev
12:01:15 LNXIBMDS: udevd version 128 started
12:01:16 LNXIBMDS: dasd(eckd): 0.0.0201: 3390/0C(CU:3990/01) Cyl:3338 Head:15
Sec:224
12:01:16 LNXIBMDS: dasd(eckd): 0.0.0201: (4kB blks): 2403360kB at 48kB/trk linux
disk layout
12:01:16 LNXIBMDS: dasda:CMS1/ SLES11: dasdal
12:01:17 LNXIBMDS: Boot logging started on /dev/ttyS0(/dev/console) at Thu Oct
15 16:01:12 2009
12:01:17 LNXIBMDS: Waiting for device /dev/disk/by-path/ccw-0.0.0201-part1 to
appear: ok
12:01:17 LNXIBMDS: fsck 1.41.1 (01-Sep-2008)
12:01:17 LNXIBMDS: [/sbin/fsck.ext3 (1) -- /] fsck.ext3 -a
/dev/disk/by-path/ccw-0.0.0201-part1
12:01:17 LNXIBMDS: /dev/disk/by-path/ccw-0.0.0201-part1: clean, 7024/150480
files, 75657/600837 blockskjournal starting. Commit interval 5 seconds
12:01:17 LNXIBMDS: EXT3 FS on dasdal, internal journal
12:01:17 LNXIBMDS: EXT3-fs: mounted filesystem with ordered data mode.
12:01:17 LNXIBMDS:
12:01:17 LNXIBMDS: fsck succeeded. Mounting root device read-write.
12:01:17 LNXIBMDS: Mounting root /dev/disk/by-path/ccw-0.0.0201-part1
12:01:17 LNXIBMDS: mount -o rw,acl,user_xattr -t ext3
/dev/disk/by-path/ccw-0.0.0201-part1 /root
12:01:18 LNXIBMDS: mount: can't find /root/proc in /etc/fstab or /etc/mtab
12:01:18 LNXIBMDS: INIT: version 2.86 booting
-----
SYSTEM Window
1= ViewNext 2= Review 3= ViewPrev 4= RemvLine 5= Remv All 6= Retrieve
7= 8= 9= Repeat 10= Print 11= Expand 12= Remv Top
===> MAINOPER
```



SECUSER window showing Linux startup messages

```
testcp7 with lnxibmids
QW53270 Edit View Options Tools Help
LNXIBMDS 000%      28 Users  VM:Operator on OPERATOR(TESTCP7)  Thu 15Oct09  12:01
VMYSEC0054I SCIF userid: LNXIBMDS      Status: RUNNING
/dev/disk/by-path/ccw-0.0.0202-part1: clean, 82481/150480 files, 453307/600837 b
kjournald starting.  Commit interval 5 seconds
EXT3 FS on dasdbl, internal journal
EXT3-fs: mounted filesystem with ordered data mode.

..done..done
Mounting local file systems...
/proc on /proc type proc (rw)
sysfs on /sys type sysfs (rw)
debugfs on /sys/kernel/debug type debugfs (rw)
udev on /dev type tmpfs (rw)
devpts on /dev/pts type devpts (rw,mode=0620,gid=5)
/dev/dasdbl on /usr type ext3 (rw,acl,user_xattr)
..done
fuse init (API version 7.9)
Loading fuse module ..done
Mounting fuse control filesystem..done
Unable to find swap-space signature
Activating remaining swap-devices in /etc/fstab...
..failed
Creating /var/log/boot.msg
..done
Turning quota on
Checking quotas. This may take some time.
..done
Setting current sysctl status from /etc/sysctl.conf..done
----- LINUXID Window -----
1= ViewNext      2=          3= ViewMain    4=          5=          6= Retrieve
7=              8=          9= Repeat      10= Print   11= Expand   12= Remv Top
===> _
MAINOPER
```

Connected to testcp7.ca.com port 23

32/6 NUM 12:01:12 IBM-3278-3-E



SECUSER window showing Linux startup messages

```
testcp7 with lnxibmids
QW53270 Edit View Options Tools Help
LNXIBMDS 000%      28 Users  VM:Operator on OPERATOR(TESTCP7)  Thu 15Oct09  12:01
VMYSEC0054I SCIF userid: LNXIBMDS      Status: RUNNING
/dev/dasda1: Device or resource busy
swapon: /dev/dasdc1: Invalid argument
..failed
INIT:
Entering runlevel: 5
Boot logging started on /dev/ttyS0(/dev/console) at Thu Oct 15 12:01:33 2009
Master Resource Control: previous runlevel: N, switching to runlevel: 5
Initializing random number generator..done
Starting D-Bus daemon
..done
Loading CPUFreq modules (CPUFreq not supported)
Starting HAL daemon
..done
Setting up (localfs) network interfaces:
  lo
  lo      IP address: 127.0.0.1/8
         IP address: 127.0.0.2/8
..done   eth0      name: OSA Express Network card (0.0.0c00)
         eth0    IP address: 141.202.200.9/24
..done
Setting up service (localfs) network . . . . .done
Starting syslog services
..done
Starting rpcbind
..done
Not starting NFS client services - no NFS found in /etc/fstab:..unused
----- LINUXID Window -----
1= ViewNext  2=          3= ViewMain  4=          5=          6= Retrieve
7=          8=          9= Repeat   10= Print   11= Expand  12= Remv Top
===> _
MAINOPER
```

Connected to testcp7.ca.com port 23

32/6 NUM 12:01:27 IBM-3278-3-E



SECUSER window showing Linux startup messages

```
testcp7 with lnxibmids
QW53270 Edit View Options Tools Help
LNXIBMDS 002%      28 Users  VM:Operator on OPERATOR(TESTCP7) Thu 15Oct09 12:02
VMYSEC0054I SCIF userid: LNXIBMDS Status: RUNNING
IP address: 127.0.0.2/8
..done eth0 name: OSA Express Network card (0.0.0c00)
eth0 IP address: 141.202.200.9/24
..done
Setting up service (localfs) network . . . . . ..done
Starting syslog services
..done
Starting rpcbind
..done
Not starting NFS client services - no NFS found in /etc/fstab:..unused
Starting service xdm
..done
Starting httpd2 (prefork)
..done
Starting irqbalance
..unused
Starting Name Service Cache Daemon..failed
Starting java.binfmt_misc ..done
Starting mail service (Postfix)
..done
Setting up (remotefs) network interfaces:
Setting up service (remotefs) network . . . . . ..done
Starting smartd ..unused
Starting CRON daemon
..done
Starting SSH daemon
----- LINUXID Window -----
1= ViewNext 2= 3= ViewMain 4= 5= 6= Retrieve
7= 8= 9= Repeat 10= Print 11= Expand 12= Remv Top
===> _ MAINOPER
Connected to testcp7.ca.com port 23 32/6 NUM 12:01:46 IBM-3278-3-E
```



Linux Consoles

> Challenge:

- Need to view console activity for Linux guests
- Need to enter commands to Linux guests
- Need to login to a Linux user IDs without revealing passwords on screen or system log

Linux Consoles

> Solution:

- Use CA VM:Operator SECUSER windows to manage your disconnected Linux guest
- Send commands to disconnected Linux machines
- When a SECUSER window is defined for a Linux virtual machine, you can login to root or other Linux user
- SECUSER windows can suppress password display and logging

SECUSER window showing Linux startup messages at initial Login:

```
testcp7 with lnxibmnds
QW53270 Edit View Options Tools Help
LNXIBMDS 002%      28 Users  VM:Operator on OPERATOR(TESTCP7)  Thu 15Oct09  12:02
VMYSEC0054I SCIF userid: LNXIBMDS      Status: RUNNING
..done
Starting irqbalance
..unused
Starting Name Service Cache Daemon..failed
Starting java.binfmt_misc ..done
Starting mail service (Postfix)
..done
Setting up (remotefs) network interfaces:
Setting up service (remotefs) network . . . . .done
Starting smartd ..unused
Starting CRON daemon
..done
Starting SSH daemon
..done
Starting INET services. (xinetd)
..done
Master Resource Control: runlevel 5 has been reached
Failed services in runlevel 5:  [80C [11Dnscd
Skipped services in runlevel 5:  [80C [37Dnfs irq_balancer smartd splash

Welcome to SUSE Linux Enterprise Server 11 (s390x) - Kernel 2.6.27.19-5-default
Welcome to SUSE Linux Enterprise Server 11 (s390x) - Kernel 2.6.27.19-5-default

lnxibmnds login:
----- LINUXID Window -----
1= ViewNext      2=          3= ViewMain     4=          5=          6= Retrieve
7=              8=          9= Repeat      10= Print   11= Expand   12= Remv Top
===> _
MAINOPER
```

Connected to testcp7.ca.com port 23

32/6 NUM 12:02:02 IBM-3278-3-E



SECUSER window for Linux ID: Logging into root with VM:Operator password prompt

```
testcp7 with lnxibmids
QW53270 Edit View Options Tools Help
Starting Name Service Cache Daemon..failed
Starting java.binfmt_misc ..done
Starting mail service (Postfix)
..done
Setting up (remotefs) network interfaces:
Setting up service (remotefs) network . . . . .done
Starting smartd ..unused
Starting CRON daemon
..done
Starting SSH daemon
..done
Starting INET services. (xinetd)
..done
Master Resource Control: runlevel 5 has been reached
Failed services in runlevel 5: [80C [11Dnscd
Skipped services in runlevel 5: [80C [37Dnfs irq_balancer smartd splash

Welcome to SUSE Linux Enterprise Server 11 (s390x) - Kernel 2.6.27.19-5-default
Welcome to SUSE Linux Enterprise Server 11 (s390x) - Kernel 2.6.27.19-5-default

lnxibmids login:
root
root
----- LINUXID Window -----
1= ViewNext 2= 3= ViewMain 4= 5= 6= Retrieve
7= 8= 9= Repeat 10= Print 11= Expand 12= Remv Top
VMYSEC0390R Enter password: _ MAINOPER

Connected to testcp7.ca.com port 23 32/29 NUM 12:02:23 IBM-3278-3-E
```



SECUSER window for Linux ID: Logging into root Password masked with *****

```
testcp7 with lnxibmids
QW53270 Edit View Options Tools Help
LNXIBMDS 002%      28 Users  VM:Operator on OPERATOR (TESTCP7)  Thu 15Oct09  12:03
VMYSEC0054I SCIF userid: LNXIBMDS      Status: RUNNING
..done
Setting up (remotefs) network interfaces:
Setting up service (remotefs) network . . . . .done
Starting smartd ..unused
Starting CRON daemon
..done
Starting SSH daemon
..done
Starting INET services. (xinetd)
..done
Master Resource Control: runlevel 5 has been reached
Failed services in runlevel 5:  [80C [11Dnscd
Skipped services in runlevel 5:  [80C [37Dnfs irq_balancer smartd splash

Welcome to SUSE Linux Enterprise Server 11 (s390x) - Kernel 2.6.27.19-5-default
Welcome to SUSE Linux Enterprise Server 11 (s390x) - Kernel 2.6.27.19-5-default

lnxibmids login:
root
root
*****

Last login: Mon Oct 12 10:09:21 EDT 2009 on ttyS0
lnxibmids:~ #
----- LINUXID Window -----
1= ViewNext      2=          3= ViewMain    4=          5=          6= Retrieve
7=              8=          9= Repeat     10= Print   11= Expand   12= Remv Top
===> _
MAINOPER
```



SECUSER window for Linux ID: Entering Linux command on root

```
testcp7 with lnxibmids
QW53270 Edit View Options Tools Help

LNXIBMDS 002%      28 Users  VM:Operator on OPERATOR(TESTCP7)  Thu 15Oct09  12:03
VMYSEC0054I SCIF userid: LNXIBMDS      Status: RUNNING
Welcome to SUSE Linux Enterprise Server 11 (s390x) - Kernel 2.6.27.19-5-default

lnxibmids login:
root
root
*****

Last login: Mon Oct 12 10:09:21 EDT 2009 on ttyS0
lnxibmids:~ #
ls -l
ls -l
total 100
-rw----- 1 root root 6452 Oct 12 10:05 .bash_history
drwxr-xr-x 2 root root 4096 Apr 28 14:26 .config
-rw-r--r-- 1 root root 1332 Nov 23 2005 .exrc
drwx----- 2 root root 4096 Apr 28 14:13 .gnupg
drwxr-xr-x 3 root root 4096 Sep 21 15:40 .mc
-rw----- 1 root root 12288 Oct 6 13:12 .swp
-rw-r--r-- 1 root root 344 Sep 21 08:00 .therc
-rw----- 1 root root 1048 Oct 6 13:13 .viminfo
drwxr-xr-x 2 root root 4096 Apr 28 14:42 .vnc
-rw-r--r-- 1 root root 43066 Apr 28 14:42 autoinst.xml
drwxr-xr-x 2 root root 4096 Feb 20 2009 bin
drwxr-xr-x 6 root root 4096 Apr 28 13:19 inst-sys
lnxibmids:~ #
----- LINUXID Window -----
1= ViewNext      2=          3= ViewMain     4=          5=          6= Retrieve
7=              8=          9= Repeat      10= Print   11= Expand   12= Remv Top
===> _
MAINOPER
```



Temporary Operator Consoles

> Challenge:

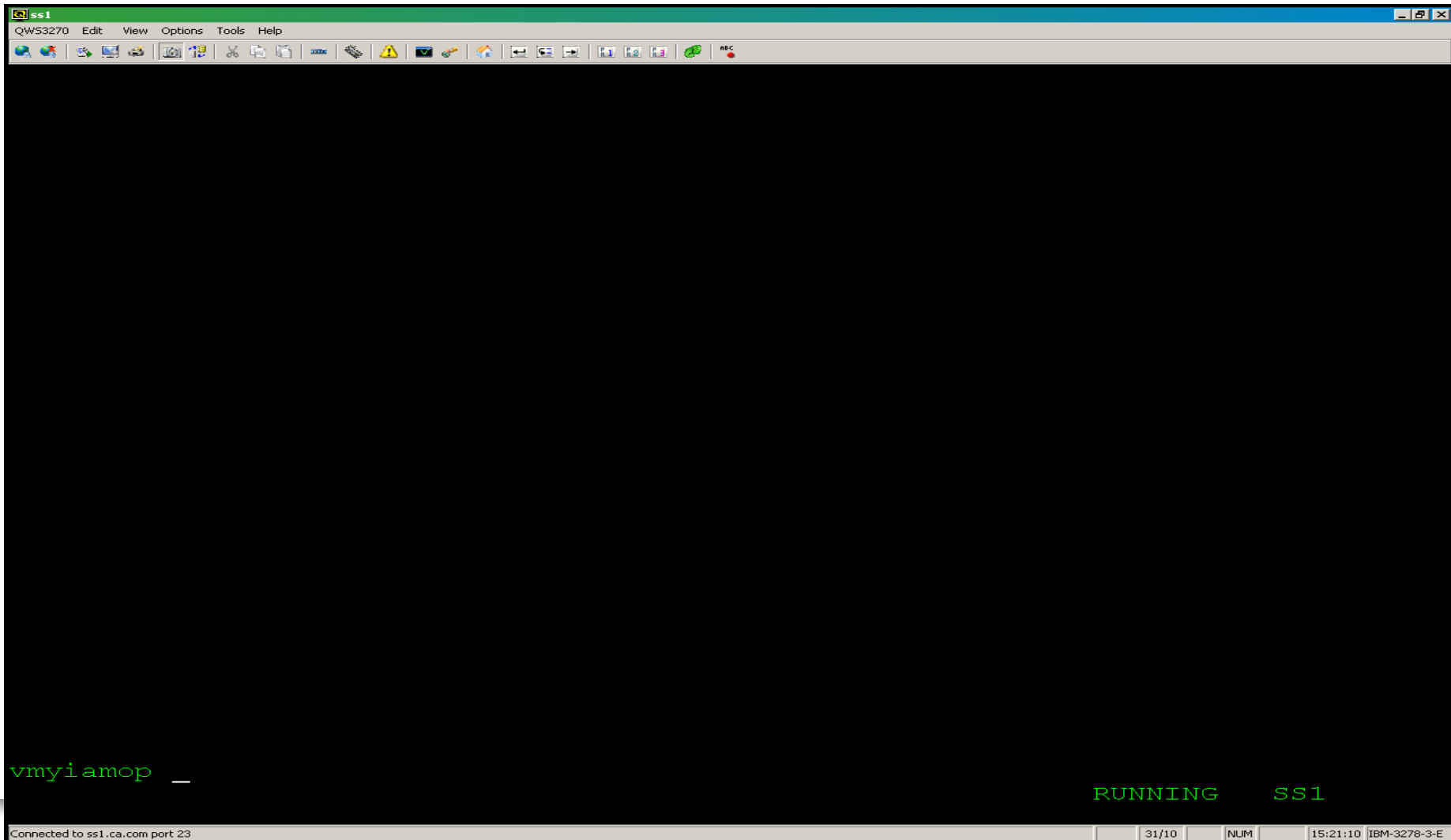
- System Programmers spread across the country and they need to access the system console
- Cost prohibitive and impractical for systems programmers to go the data center
- Doesn't make sense to hire systems programmers that are located locally

Temporary Operator Consoles

> Solution:

- CA VM:Operator's 'I AM OPERATOR' (VMYIAMOP)
 - View activity and issue operator commands
 - No need to go to data center
- Provides access to all CA VM:Operator windows from CMS user console
- All commands and responses recorded in system log

I AM OPERATOR (VMYIAMOP)



I AM OPERATOR

```
ss1
QW53270 Edit View Options Tools Help
SYSTEM 000% 54 Users VM : Operator Thursday 15Oct09 15:22

VMYMAI0176I MAINOPER routing table loaded for SYSTEM window on LNXMAINT console.
VMYIOD0190I User LNXMAINT is now an IUCV-connected console.
----- System Window -----
1= ViewNext 2= Review 3= ViewPrev 4= RemvLine 5= Remv All 6= Retrieve
7= Disconn 8= Cancel 9= Repeat 10= Print 11= Expand 12= Remv Top
===> LNXMAINT
```

Connected to ss1.ca.com port 23

32/6 NUM 15:22:00 IBM-3278-3-E



Automation

> Challenge:

- Need for z/VM and Linux automation
 - Take automated action or response for events
- Need to automate repetitive tasks
 - Eliminate human error
- Notification such as emails for serious events
 - Linux guest unexpectedly reboots
 - Disk space fills up because a mail queue on Linux was not cleared
 - Denial-of-service attack has been detected
 - Backup failed
 - Tape mount was never satisfied

Automation

> Solution:

- CA VM:Operator Action Routines
- Action routines perform a specific action when a message is received
 - routines can be REXX EXECs, macros, modules, etc.
- These routines can:
 - issue commands (CP, CMS, Linux, email, etc)
 - trap and examine messages
 - perform a variety of complex functions
 - spawn or call other action routines
- Action routines complete z/VM and Linux automation

Access Multiple Sessions

> Challenge:

- Need to logon to a user ID from my z/VM 3270 session.
- Need to log on and off many user IDs
- Impractical to use a 3270 emulator window for each user ID

Access Multiple Session

> Solution:

- CA VM:Operators's Session Support Facility provides access to multiple user IDs or 3270 applications from a single console
- Prevents having to use another terminal
- The Session Support Facility lets you:
 - Switch between sessions just by pressing a PF key or issuing a command
 - Notify operators of important messages received on a session
 - Watch events occurring on a session being displayed on another console
 - Simulate actions of keyboard and control session without human intervention
 - Run commands on another session that may be disruptive to operator console

SESSIONS screen

```
testcp7 with Inxibmds
QW53270 Edit View Options Tools Help
SESSIONS 002%      28 Users   VM:Operator on OPERATOR(TESTCP7)  Thu 15Oct09 12:04
Session Ldev      Last      Screen    Status    Return: SYSREQ Toggle: PF3
Name     Address    Viewed    Updates  Information Back: PF1   Next: PF2
SESSION1 L010      16        16       Logon Reconnect of NEWID took 3.65
SESSION2 L011      16        16       Logon Reconnect of NEWID1 took 3.70
SESSION3 L012      1         1        Sample session 3
SESSION4 L013      1         1        Sample session 4
LINUX    0         0         0        LNXLOGON DIALOG completed, RC= 0.

----- Sessions Window -----
1= ViewNext  2= Refresh  3= ViewMain  4=          5=          6= Retrieve
7= Backward  8= Forward  9= Repeat    10= Print   11= Session 12= Cursor
====>
MAINOPER
```



SESSIONS screen

```
testcp7 with Inxibmds
QW53270 Edit View Options Tools Help
SESSIONS 001%      28 Users   VM:Operator on OPERATOR(TESTCP7) Thu 15Oct09 12:05
Session Ldev      Last      Screen    Status    Return: SYSREQ Toggle: PF3
Name     Address    Viewed    Updates  Information Back: PF1 Next: PF2
SESSION1 L010      16        16        Logon Reconnect of NEWID took 3.65
SESSION2 L011      16        16        Logon Reconnect of NEWID1 took 3.70
SESSION3 L012      1         1         Sample session 3
SESSION4 L013      1         1         Sample session 4
LINUX    0         0         Terminated...

VMYLGD0037I Session LINUX on L0015 has been terminated.
----- Sessions Window -----
1= ViewNext  2= Refresh  3= ViewMain  4=          5=          6= Retrieve
7= Backward  8= Forward  9= Repeat   10= Print   11= Session 12= Cursor
====>
MAINOPER
```



Linux Syslogd and Syslog-ng Support

> Challenge:

- Need to consolidate messages from SYSLOGD, SYSLOG-NG and z/VM into a single log
- Need messages stored on Linux or z/VM
- Need proper formatting of messages

Linux Syslogd and Syslog-ng Support

> Solution:

- CA VM:Operator can interoperate with the Linux SYSLOGD or SYSLOG-NG
- CA VM:Operator can send selected messages to a specific Linux host running a central collecting SYSLOGD
- CA VM:Operator acts as a SYSLOGD collector by receiving SYSLOGD or SYSLOG-NG messages from other Linux hosts
- Messages are modified to conform to CA VM:Operator formatting standards

Review window showing syslog-ng messages collected by VM:Operator

```
testcp7 with lnxbmbs
QW53270 Edit View Options Tools Help
REVIEW 000% 29 Users VM:Operator Thursday 15Oct09 12:29
VMYREV0125I Reviewing: 091015 SYSLOG Forward Scanning for: DAEMO
12:27:58 LNXIBMDS *S daemon.notice syslog-ng[1304]: syslog-ng starting up; ver
12:27:58 LNXIBMDS *S daemon.err syslog-ng[1304]: Connection failed; error='\Co
12:27:58 LNXIBMDS *S news.info smartd[1492]: smartd 5.39 2008-10-24 22:33 [s39
12:27:58 LNXIBMDS .... 8 by Bruce Allen, http://smartmontools.sourceforge.net
12:27:58 LNXIBMDS *S news.info smartd[1492]: Opened configuration file /etc/sm
12:27:58 LNXIBMDS *S news.info smartd[1492]: Drive: DEVICSCAN, implied \'-a\'
12:27:58 LNXIBMDS *S news.info smartd[1492]: Configuration file /etc/smartd.co
12:27:58 LNXIBMDS *S news.crit smartd[1492]: Problem creating device name scan
12:27:58 LNXIBMDS *S news.crit smartd[1492]: In the system\'s table of devices
12:27:58 LNXIBMDS *S news.info smartd[1492]: Unable to monitor any SMART enabl
12:27:58 LNXIBMDS *S mail.info postfix/postfix-script[1518]: starting the Pos
12:27:58 LNXIBMDS *S mail.info postfix/master[1519]: daemon started -- versio
12:27:58 LNXIBMDS *S local0.info /usr/sbin/cron[1539]: (CRON) STARTUP (V5.0)
12:27:58 LNXIBMDS *S uucp.info sshd[1557]: Server listening on 0.0.0.0 port 22
12:27:58 LNXIBMDS *S uucp.info sshd[1557]: Server listening on :: port 22.
12:27:58 LNXIBMDS *S news.debug xinetd[1558]: Reading included configuration f
12:27:58 LNXIBMDS .... line=26]
12:27:58 LNXIBMDS *S news.debug xinetd[1558]: Reading included configuration f
12:27:58 LNXIBMDS ... hargen-udp] [line=14]
12:27:58 LNXIBMDS *S news.debug xinetd[1558]: Reading included configuration f
12:27:58 LNXIBMDS .... e=15]
12:27:58 LNXIBMDS *S news.debug xinetd[1558]: Reading included configuration f
12:27:58 LNXIBMDS .... me] [line=16]
12:27:58 LNXIBMDS *S news.debug xinetd[1558]: Reading included configuration f
12:27:58 LNXIBMDS ... ayttime-udp] [line=14]
12:27:58 LNXIBMDS *S news.debug xinetd[1558]: Reading included configuration
PF set 1 ----- System Review -----
1= Top 2= Refresh 3= Return 4= PrevHour 5= NextHour 6= Retrieve
7= Backward 8= Forward 9= Extract 10= AltPFkey 11= Left 12= Right
VMYREV0120R Enter search string: MAINOPER
Connected to testcp7.ca.com port 23 26/3 NUM 12:28:51 IBM-3278-3-E
```



Review window showing syslog-ng messages collected by VM:Operator

```
testcp7 with lnxbmnds
QW53270 Edit View Options Tools Help
REVIEW 000% 29 Users VM:Operator Thursday 15Oct09 12:30
VMYREV0125I Reviewing: 091015 SYSLOG Forward Scanning for: DAEMO
12:27:58 LNXIBMDS ... ices] [line=14]
12:27:58 LNXIBMDS *S news.debug xinetd[1558]: Reading included configuration f
12:27:58 LNXIBMDS ... ] [line=14]
12:27:58 LNXIBMDS *S news.debug xinetd[1558]: Reading included configuration f
12:27:58 LNXIBMDS ... ine=17]
12:27:58 LNXIBMDS *S news.debug xinetd[1558]: Reading included configuration f
12:27:58 LNXIBMDS ... -udp] [line=15]
12:27:58 LNXIBMDS *S news.debug xinetd[1558]: Reading included configuration f
12:27:58 LNXIBMDS ... e=15]
12:27:58 LNXIBMDS *S news.notice xinetd[1558]: xinetd Version 2.3.14 started w
12:27:58 LNXIBMDS *S news.notice xinetd[1558]: Started working: 2 available s
12:27:58 LNXIBMDS *S daemon.err syslog-ng[1304]: Connection failed; error=\ 'C
12:27:58 LNXIBMDS *S daemon.err syslog-ng[1304]: Connection failed; error=\ 'Co
12:27:58 LNXIBMDS *S daemon.err syslog-ng[1304]: Connection failed; error=\ 'Co
12:27:58 LNXIBMDS *S daemon.err syslog-ng[1304]: Connection failed; error=\ 'Co
12:27:58 LNXIBMDS *S daemon.err syslog-ng[1304]: Connection failed; error=\ 'Co
12:27:58 LNXIBMDS *S daemon.err syslog-ng[1304]: Connection failed; error=\ 'Co
12:27:58 LNXIBMDS *S daemon.err syslog-ng[1304]: Connection failed; error=\ 'Co
12:27:58 LNXIBMDS *S daemon.err syslog-ng[1304]: Connection failed; error=\ 'Co
12:27:58 LNXIBMDS *S daemon.info syslog-ng[1304]: Log statistics; dropped=\ 'tc
12:27:58 LNXIBMDS ... er(queued)=42\ ', processed=\ 'center(received)=42\ ', proce
12:27:58 LNXIBMDS ... )=42\ '
12:27:58 LNXIBMDS *S daemon.err syslog-ng[1304]: Connection failed; error=\ 'Co
12:27:58 LNXIBMDS *S daemon.err syslog-ng[1304]: Connection failed; error=\ 'Co
12:27:58 LNXIBMDS *S daemon.err syslog-ng[1304]: Connection failed; error=\ 'C
PF set 1 ----- System Review -----
1= Top 2= Refresh 3= Return 4= PrevHour 5= NextHour 6= Retrieve
7= Backward 8= Forward 9= Extract 10= AltPFkey 11= Left 12= Right
VMYREV0120R Enter search string: MAINOPER
Connected to testcp7.ca.com port 23 26/3 NUM 12:30:20 IBM-3278-3-E
```



Review window showing syslog-ng messages collected by VM:Operator

```
testcp7 with lnxbmbs
QW53270 Edit View Options Tools Help
REVIEW 002% 28 Users VM:Operator on VMYGUIRI (TESTCP7) Thu 15Oct09 12:35
VMYREV0119I Reviewing: 091015 SYSLOG Backward scrolling.
12:27:46 VMYGUIRI 0005 CAS9115I - LMP input: *
12:27:58 LNXIBMDS *S daemon.notice syslog-ng[1304]: syslog-ng starting up; ver
12:27:58 LNXIBMDS *S daemon.err syslog-ng[1304]: Connection failed; error='\Co
12:27:58 LNXIBMDS *S news.info smartd[1492]: smartd 5.39 2008-10-24 22:33 [s39
12:27:58 LNXIBMDS ... 8 by Bruce Allen, http://smartmontools.sourceforge.net
12:27:58 LNXIBMDS *S news.info smartd[1492]: Opened configuration file /etc/sm
12:27:58 LNXIBMDS *S news.info smartd[1492]: Drive: DEVICESCAN, implied \'-a\'
12:27:58 LNXIBMDS *S news.info smartd[1492]: Configuration file /etc/smartd.co
12:27:58 LNXIBMDS *S news.crit smartd[1492]: Problem creating device name scan
12:27:58 LNXIBMDS *S news.crit smartd[1492]: In the system\'s table of devices
12:27:58 LNXIBMDS *S news.info smartd[1492]: Unable to monitor any SMART enabl
12:27:58 LNXIBMDS *S mail.info postfix/postfix-script[1518]: starting the Pos
12:27:58 LNXIBMDS *S mail.info postfix/master[1519]: daemon started -- version
12:27:58 LNXIBMDS *S local0.info /usr/sbin/cron[1539]: (CRON) STARTUP (V5.0)
12:27:58 LNXIBMDS *S uucp.info sshd[1557]: Server listening on 0.0.0.0 port 22
12:27:58 LNXIBMDS *S uucp.info sshd[1557]: Server listening on :: port 22.
12:27:58 LNXIBMDS *S news.debug xinetd[1558]: Reading included configuration f
12:27:58 LNXIBMDS ... line=26]
12:27:58 LNXIBMDS *S news.debug xinetd[1558]: Reading included configuration f
12:27:58 LNXIBMDS ... hargen-udp] [line=14]
12:27:58 LNXIBMDS *S news.debug xinetd[1558]: Reading included configuration f
12:27:58 LNXIBMDS ... e=15]
12:27:58 LNXIBMDS *S news.debug xinetd[1558]: Reading included configuration f
12:27:58 LNXIBMDS ... me] [line=16]
12:27:58 LNXIBMDS *S news.debug xinetd[1558]: Reading included configuration f
12:27:58 LNXIBMDS ... aytime-udp] [line=14]
PF set 1 ----- System Review -----
1= Top 2= Refresh 3= Return 4= PrevHour 5= NextHour 6= Retrieve
7= Backward 8= Forward 9= Extract 10= AltPFkey 11= Left 12= Right
VMYREV0120R Enter search string: _ MAINOPER
Connected to testcp7.ca.com port 23 32/34 NUM 12:35:03 IBM-3278-3-E
```



Remote z/VM Systems

> Challenge:

- Need to issue operator commands to a number of remote z/VM systems
- Need to issue remote operator commands at the same time
- Need to issue remote operator commands from one place
- Need to route messages to remote systems

Remote z/VM Systems

> Solution:

- Remote CA VM:Operator Support (RVS) can issue commands on remote z/VM systems
- Commands respond and behave as if they are being issued locally
- Messages can be routed to specific CA VM:Operator systems for processing

RVS: REMOTE command from CA VM:Operator SYSTEM WINDOW

```
system c
QW53270 Edit View Options Tools Help
SYSTEM 000% 16 Users VM:Operator on OPERATOR(ZVM610) Thu 15Oct09 11:19
DASD 0AFF CP SYSTEM VMVSE1 0
DASD 0FAB CP SYSTEM PAVALA 0
VMYINI0006I 0.000 Ready;
rvs query
NodeID Status WriteCtr ReadCtr
-----
ZVM530 Enabled 32 32
ZVM540 Enabled 42 42
VMYINI0006I 0.000 Ready;
remote zvm530 cp q names
VMRMAINT -L0003, GUIRI01 -L0004, VMWEBSRV - DSC , LOGN0009 - 0009
VSMREQIN - DSC , IMLST01 - DSC , VSMWORK2 - DSC , RSCS - DSC
VSMWORK1 - DSC , VSPSERV - DSC , VMSEKVS - DSC , VMNFS - DSC
RSCSDNS - DSC , PORTMAP - DSC , FTPSERVE - DSC , GCS - DSC
TCPIP - DSC , VMX$0003 - DSC , VMX$0002 - DSC , VMX$0001 - DSC
VMSECURE - DSC , OPERATOR -L000C
VSM - TCPIP
VMYINI0006I 0.000 Ready;
remote zvm540 cp q names
VMRMAINT - DSC , CAIMAIN - DSC , VMSPOOL - DSC , VMBACKUP - DSC
VMTAPE - DSC , LOGN0009 - 0009, IMLST01 - 0021, VSMPROXY - DSC
VSMREQIN - DSC , VSMWORK2 - DSC , VSMWORK1 - DSC , RSCS - DSC
VSPSERV - DSC , RSCSDNS - DSC , FTPSERVE - DSC , GCS - DSC
TCPIP - DSC , VMX$0002 - DSC , VMX$0001 - DSC , VMSECURE - DSC
DISKACNT - DSC , OPERATOR - 0022
VSM - TCPIP
VMYINI0006I 0.000 Ready;
----- SYSTEM Window -----
1= ViewNext 2= Review 3= ViewPrev 4= RemvLine 5= Remv All 6= Retrieve
7= 8= 9= Repeat 10= Print 11= Expand 12= Remv Top
====> MAINOPER
```



Using REMOTE commands from a user

```
system c
QW53270 Edit View Options Tools Help
operator rvs query
NodeID      Status          WriteCtr  ReadCtr
-----
ZVM530      Enabled          63        63
ZVM540      Enabled          50        50
Ready; T=0.01/0.01 11:20:40
operator remote zvm530 cp query names
VMRMAINT -L0003, GUIRI01 -L0004, VMWEBSRV - DSC , LOGN0009 - 0009
VSMREQIN - DSC , IMLST01 - DSC , VSMWORK2 - DSC , RSCS - DSC
VSMWORK1 - DSC , VSPSERV - DSC , VMSERVS - DSC , VMNFS - DSC
RSCSDNS - DSC , PORTMAP - DSC , FTPSERVE - DSC , GCS - DSC
TCPPIP - DSC , VMX$0003 - DSC , VMX$0002 - DSC , VMX$0001 - DSC
VMSECURE - DSC , OPERATOR -L000C
VSM - TCPPIP
Ready; T=0.01/0.01 11:20:47
operator remote zvm540 cp query names
VMRMAINT - DSC , CAIMAIN - DSC , VMSPOOL - DSC , VMBACKUP - DSC
VMTAPE - DSC , LOGN0009 - 0009, IMLST01 - 0021, VSMPROXY - DSC
VSMREQIN - DSC , VSMWORK2 - DSC , VSMWORK1 - DSC , RSCS - DSC
VSPSERV - DSC , RSCSDNS - DSC , FTPSERVE - DSC , GCS - DSC
TCPPIP - DSC , VMX$0002 - DSC , VMX$0001 - DSC , VMSECURE - DSC
DISKACNT - DSC , OPERATOR - 0022
VSM - TCPPIP
Ready; T=0.01/0.01 11:20:52
```

RUNNING ZVM610



Conclusion

VM:Operator™ DELIVERS

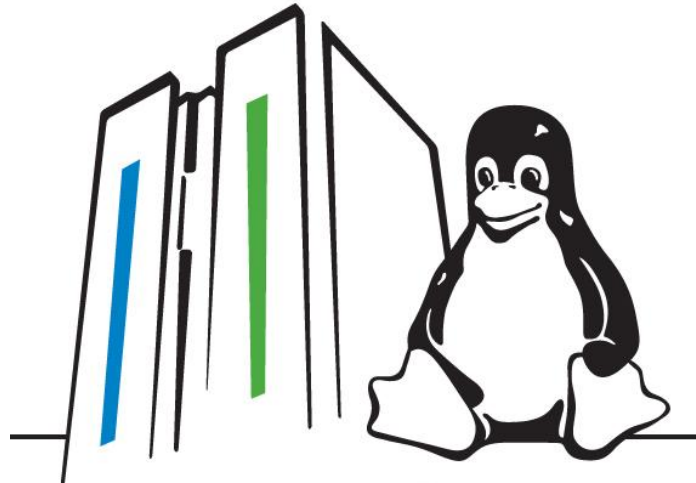
- > Increased Productivity
- > Increased Efficiency
- > Improved Auditability

Event Automation for z/VM and Linux

PROVEN TECHNOLOGY

- > Automated Actions
- > Message Filtering
- > Multiple Consoles

Questions and Answers



Visit

ca.com/mainframe/linux

today!